

## “Toul Combined Power Plant”, France Combined Cycle Gas Turbine (CCGT) Power Plant



In the period from February 2012 to January 2013, Bohle Isoliertechnik GmbH processed an order from Siemens AG for the “Toul Combined Power Plant” construction project in France.

This is a 413 MW combined-cycle gas-turbine power plant operated by the French electricity and gas supplier POWEO.

From 2013 onwards, the Toul power plant will supply electricity to approximately 400,000 households, which corresponds to some one million French residents. This innovative technology is particularly efficient and emits 60% less CO<sub>2</sub> than a modern coal-fired power station. The investments amount to some €350m. The project is being implemented by the company POWEO Toul Production, a 100% subsidiary of VERBUND AG, Austria's leading electricity company and one of Europe's key energy companies.

Bohle carried out insulation work for the following parts:

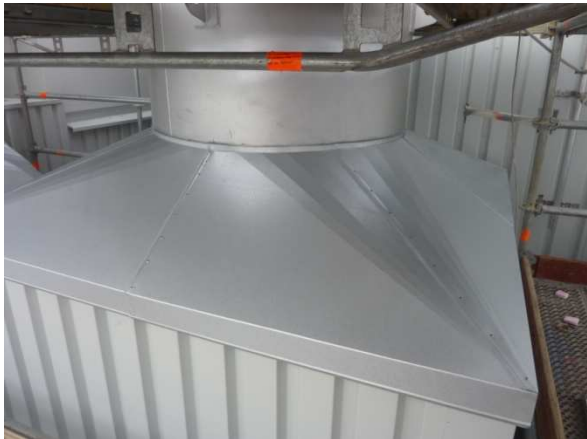
### HRSG (Heat Recovery Steam Generator):

- Approx. 7,000 m<sup>2</sup> of insulation surface on pipelines and tanks, approx. 350 m<sup>2</sup> of which uses special Pyrogel XT insulation material
- Roof sealing between the UHA building and the chimney
- Sealing openings around the five silencers on the UHA building using special substructures
- Billing amount: approx. €1.0m

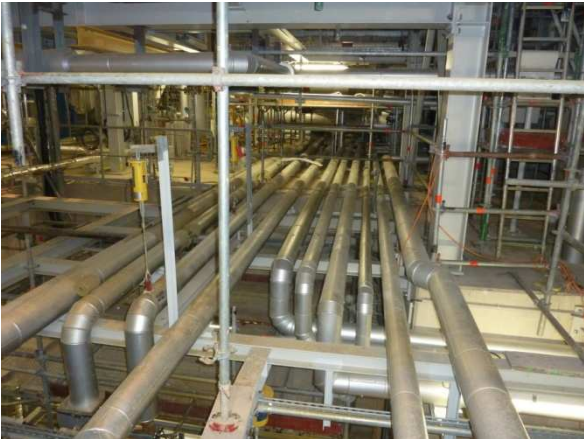
### BoP (BoilerPart):

- Approx. 9,500 m<sup>2</sup> of insulation surface on pipelines and tanks, approx. 150 m<sup>2</sup> of which uses special Pyrogel XT insulation material
- Sealing all penetration points of pipes through the facade, in part using the special “ditec seals” material and fibreglass meshes
- Construction of the entire electric tracing incl. switch cabinets and cable runs (this was carried out by our NU Trace tec division)
- Billing amount: approx. €1.8m

# Project Information



# Project Information



# Project Information

